



a Genesee & Wyoming Company

**The safest
and most
respected
rail service
provider
in the world**

OUR CORE PURPOSE

To be the safest and most respected
rail service provider in the world

Our core values

Focus ... for disciplined growth

Integrity ... to earn the trust of others

Respect ... for all people with whom we deal

Excellence ... in all we do





'Our first priority is the safety of our people and our railroads. This is top of the bill. Then, our second and third priority is to maximize our operating efficiency and optimize commercial growth. Our mission statement is simple: to be the safest and most respected rail service provider in the world. Our goal every day is zero injuries.'



ROTTERDAM RAIL FEEDING (RRF)

Leader in Last Mile and Feeder Services

Rotterdam Rail Feeding (RRF) is a railroad company specialized in high quality short line rail services. Our highly flexible and skilled employees are one of our biggest strengths. With our dedicated locomotives equipped with the required safety systems we operate in the Netherlands, Germany and Belgium. Because of our unique strategy we have become the leading independent rail service provider in the Port of Rotterdam and on the main corridors towards the German and Belgium borders.

RRF is part of Genesee & Wyoming Inc., which is listed on the New York Stock Exchange (NYSE:GWR). Genesee & Wyoming owns or leases more than 120 freight railroads worldwide that are organized in 10 operating regions with over 7,000 employees and more than 2,500 customers. G&W's Europe Region is led by Freightliner, the U.K.'s largest rail maritime intermodal operator and second-largest rail freight company. Operations also include heavy-haul in Poland and Germany and cross-border intermodal services connecting the major European seaports with key industrial regions throughout the continent.



RRF offers optimized rail solutions

CORE ACTIVITIES

- Port shunting
- Feeder services
- Construction & Testing

OUR CUSTOMERS

- Other railroad companies
- Logistics service providers
- Terminals
- Infrastructure authorities
- Rail construction companies
- Maintenance shops

‘At RRF, customers are the focus of our operations. We listen carefully to what customers say and work hard to develop creative, flexible logistics packages that address the individualized service needs. This will result in cost reduction and higher margin for the customer.’



MILESTONES

2004

Founding of RRF by Mr. Karel Poiesz

2005

Issued railroad safety certificate for The Netherlands – start of our operations

2006

First BR203 locomotive with ETCS operational

2007

Winner of the Rotterdam Entrepreneurial Award

2008

Genesee & Wyoming Inc. acquires RRF

2009

Issued railroad safety certificate for Belgium

2010

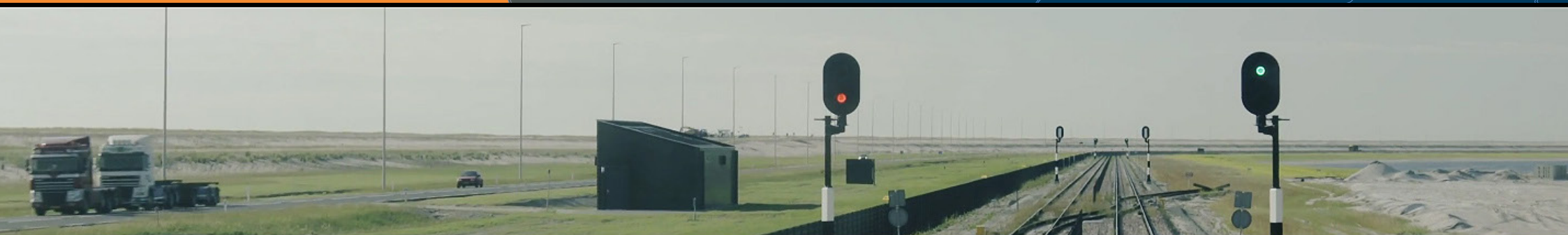
Issued railroad safety certificate for Germany

2014

Introduction of electrical locomotives types BR189 and E1600

2015

Genesee & Wyoming acquires Freightliner Group



LEADER IN PORT SHUNTING



... within Europe's busiest ports
... providing independent superior last mile services
... for railroads, terminals and logistics service providers
... with owned dedicated locomotives



Osborne Clarke,
Experts in Transport Law

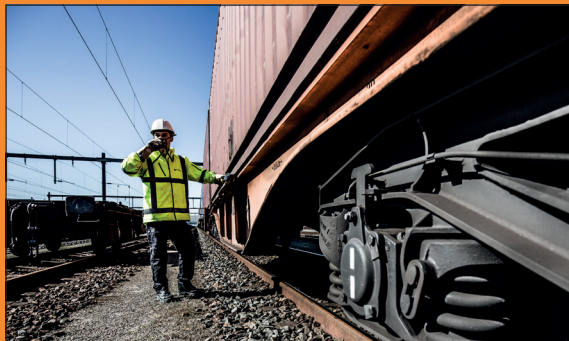


Helping you succeed in tomorrow's world
osborneclarke.com



LEADER IN FEEDER SERVICES

**... connecting Europe's busiest ports
... with hinterland destinations across Europe
... with a corridor focus offering high-frequency and
... cross-border services**



Consolid is the largest temporary employment agency and secondment firm in the Netherlands specialized in Transport & Safety services. Do you want to make your workforce more flexible? We can provide you with all the (security) personnel you need on and near the railway track, from train drivers to ticket inspectors.

With certainty. Consolid.

Consolid

[consolid.nl](https://www.consolid.nl)



LEADER IN CONSTRUCTION & TESTING SERVICES



**... providing rail traction and technical expertise
... for rail construction companies, notifying bodies and infrastructural authorities
... with our trained and experienced technical staff**

LegalRail



Keep it moving.....

Railway law

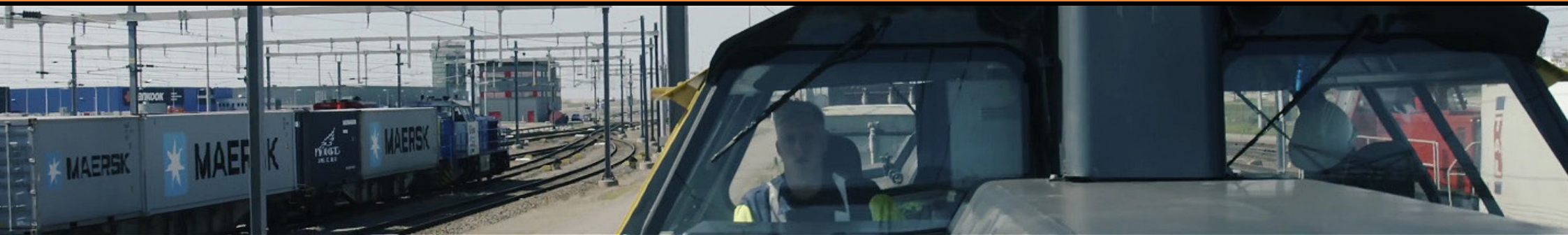
- Admission & interoperability issues (railway undertaking, railway vehicles, railway personnel)
- Liability and contract law (damages, collisions, access agreement, transport agreement)
- Innovation processes and legal audits (security issues, reactivation and conversion, implementation of legislation on main railways, regional railways, special railways)

info@legalrail.nl • www.legalrail.nl



With its operations in the Netherlands, Germany and Belgium, RRF is playing a significant role in the rail transport networks in the European Union, the Trans-European Transport Networks (TEN-T). RRF provides services on the following TEN-T corridors:

- ... North Sea – Baltic corridor**
- ... North Sea – Mediterranean corridor**
- ... Rhine – Alpine corridor**



ENVIRONMENT

Rail is the safest and cleanest transport modality

Rail is environmentally friendlier and less polluting than other modes of transport. Freight trains are three to four times more fuel-efficient than trucks. Each tonkilometer of freight moved by rail rather than highway reduces CO₂/NO_x emissions by two-thirds or more. And a train can take the load of 50 trucks off the road. Rail therefore provides a 'green' answer to congestion on Europe's highways, a problem that is likely to get worse as transport volumes increase overall.

As a leader in the short line railroad industry, and consistent with G&W's Environmental Policy, RRF is committed to a series of initiatives to protect the environment, conserve fuel and reduce locomotive emissions.





A lean organization, designed to be close to our customers

Our staff is well-educated and trained to meet your requirements, with the capacity to deal with almost any situation. Within RRF we apply best practices to conduct business with personalized involvement and a commitment to strong relationships with our customers and other stakeholders. We have the local touch that characterizes the entrepreneurial spirit of our organization.

Like we say in Rotterdam: Geen woorden maar daden.....!

'Our railroads' success depends on providing superior service to customers. We value your business above all else, and we pay close attention to improving service to you, every day, in every region.'

Rotterdam Rail Feeding B.V. (RRF)

Albert Plesmanweg 63
3088 GB Rotterdam

P.O. Box 54245
3008 JE Rotterdam
The Netherlands

T +31 (0)88 011 4200
E info@railfeeding.com
W railfeeding.com



a Genesee & Wyoming Company

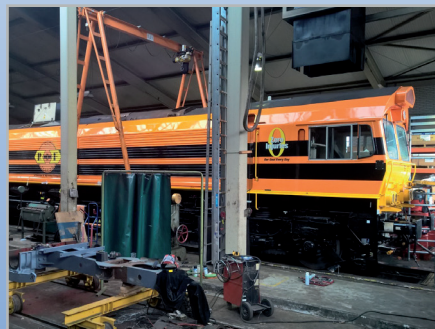


Rail Feeding





Where operations fail, we go ahead



Marintec Expertise

Surveyors and consultants in marine, non-marine, engineering, transport and cargo field available 24/7. Our company is established in Rotterdam-Maasvlakte, The Netherlands. Our principals are stevedores, transport companies, rail traction companies, wagon owners, underwriters and brokers, for surveys relating to damages, support and advice in accident investigations, claims management and loss control.

www.marintec.nl

☎ +31 181 36 36 00

Full Service Leasing in Europe



MRCE

T +31 (0) 20 70 85 910 • marketing@mrce.eu • www.mrce.eu